

PRAIRIE VIEW RDF



9/27/2010

Prairie View Landfill



- Located at JAAP, 223 acres on 455 Acre Parcel
- Will County Owner, Waste Management, Operator
- Maximum 23 Year Life

Prairie View Landfill

- IEPA Operating Permit Issued Jan 2004
- Average 2,500 – 3,000 ton/day
- Service Area – Will County, municipalities partially in Will County

Prairie View Landfill Benefits

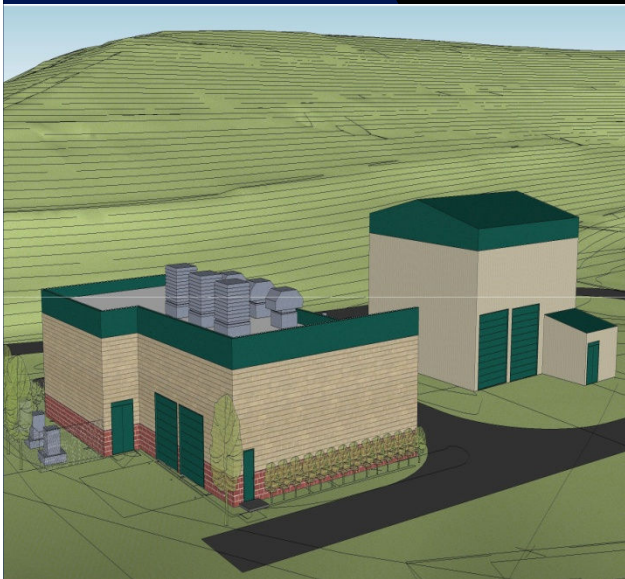
- Host Fees to County, Wilmington Taxing Bodies
- Lower Residential Price
- Free Disposal of JAAP Waste
- Household Hazardous Waste Events
- Electronics Collection Events

Gas to Energy Plant



- Landfill Contract Signed w/WMI in 1997 w/Gas to Energy Plant Clause
- County Retains Gas Rights & WM Installs Gas Collection System
- WM owns GTE Plant & Tax Credits

CONTRACT PHASE



- DOE Grant Applied 6/09
- County Board Approves DOE EECBG Strategy 11/09 ;
- \$1 Million DOE Funds to Gas to Energy Plant
- Schiff Harden Hired to Negotiate Gas to Energy Contract
- February 2010 County Board Authorizes Contract Execution

GAS TO ENERGY PLANT DETAILS

- Initially (3) 1.6 MW CAT
3520 Engines
- 12.8 MW When Built-out
- Construction Fall 2010
- Operational Spring 2011